

ManDAT-3 Manual Data Acquisition Terminal



The Manual Data Acquisition Terminal from Saab is developed from our AWOS and ATC Weather Reporter designed to be used for reporting meteorological conditions at airports. ManDAT-3 is following the rules and recommendations given by WMO concerning SYNOP reports.



ManDAT-3 can either be a stand alone system receiving information from the synoptical observer and transmitting SYNOP to the network, or it can be a fully automatic station with connected sensors -or even a hybrid between these.

When there are sensors connected to ManDAT-3, the system will present data from these, either in coded form or as un-coded data. The observer then only has to complete the report before transmitting.

When ManDAT-3 is in manual mode, it is possible to enter meteorological data in SYNOP-tical code direct or in a table accepting un-coded measured and observed data. The SYNOP report will then be transmitted to the GTS network directly or to a state/regional collecting centre.

If there is a set of sensors connected to the system, it is possible to set the ManDAT-3 into an automatic mode and it will keep on transmitting SYNOP according to the time table defined in the station parameter list. At any time it is possible to enter the system and complete or change the automatic reports.

COMBITECH AB

Saab AB • Combitech AB • SE 351 80 Växjö • Sweden

• Visiting address: Ljungadalsgatan 2

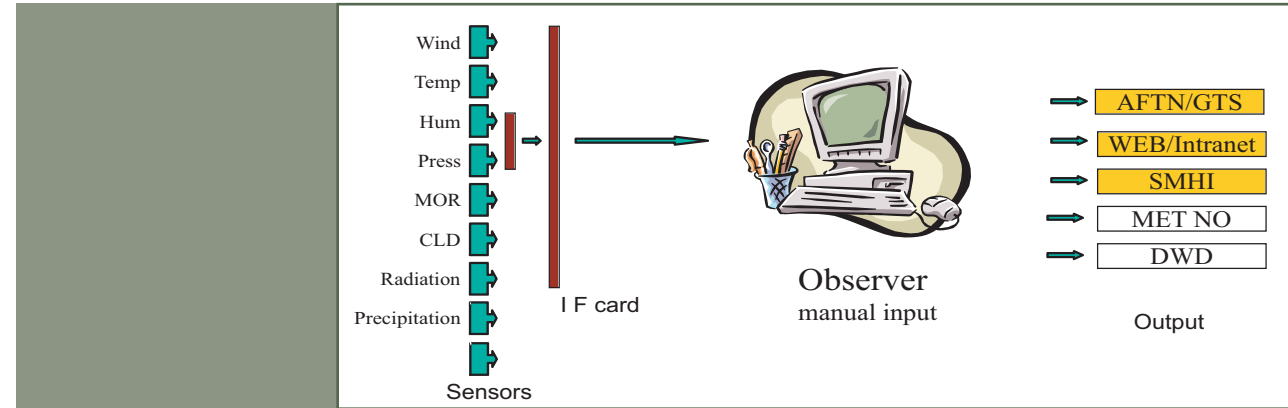
Tel +46-470-420 10 • Fax +46-470-194 05, +46-470-70 10 41



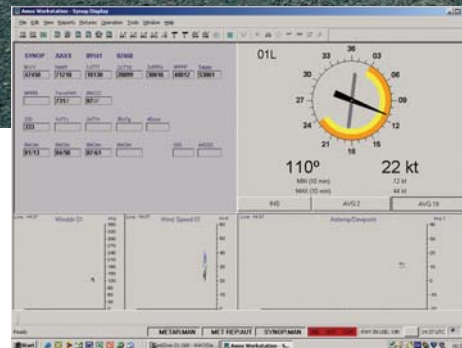
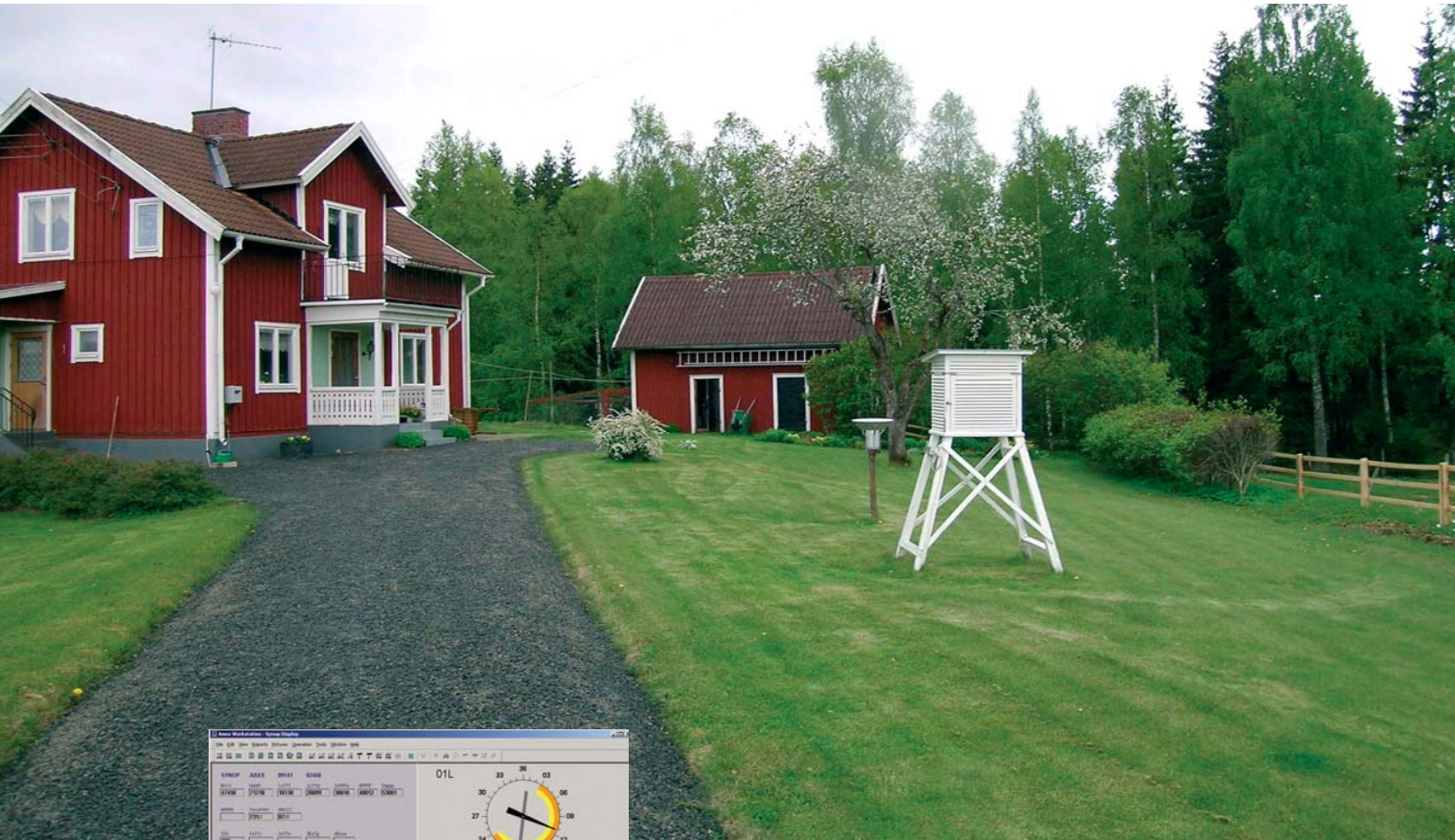
ManDAT-3

It is possible to use only the SYNOP-module in AWOS and ATC Weather Reporter:

- If no sensors at all are implemented, the ManDAT-3 will act as a pc with only man-made observations entered.
- If some sensors are implemented, figures from these will be added and coded into the report automatically.



It is possible to implement one or more sensors via a standard interface card, - or the system can be only manually operated.



Weather Reporter ManDAT-3

- SYNOP reporting
- Auto-, Semi-auto- and Manual reporting mode
- Logging
- Graphical presentation
- Same operator-HMI as AWOS
- 1 PC
- 8 I/O channels

TECHNICAL DATA

- Windows XP
- Pentium PC
- MS Access 2003
- Modem or direct connection to Internet
- Communication via FTP
- Guided data entry or direct code into message
- Data and parameter control
- 8 sensors can optionally be connected to the system
- HELP-functions and code books are available in the system
- Allows information distribution from MET Hq to SYNOP observers